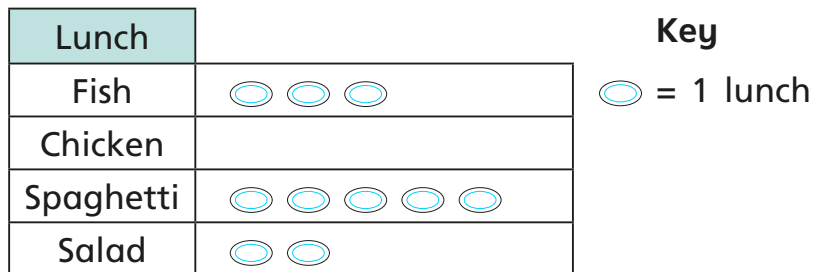
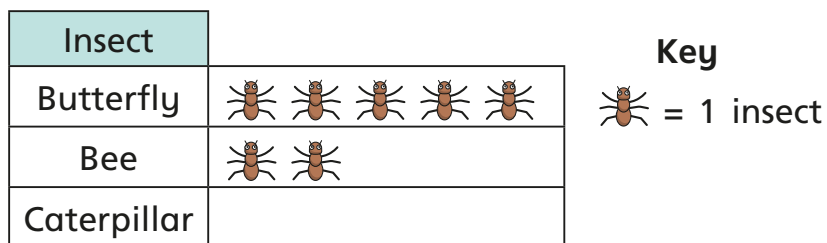


1 The pictogram shows what some teachers had for school lunch.



- a) Which lunch did the most teachers have?
- b) Which lunch did the least teachers have?
- c) How many teachers had chicken?

2 The pictogram shows how many insects Class 2 saw on a bug hunt.



a) Complete the sentences.

Class 2 saw butterflies.

Class 2 saw bees.

Class 2 saw caterpillars.

Altogether Class 2 saw insects.

b)

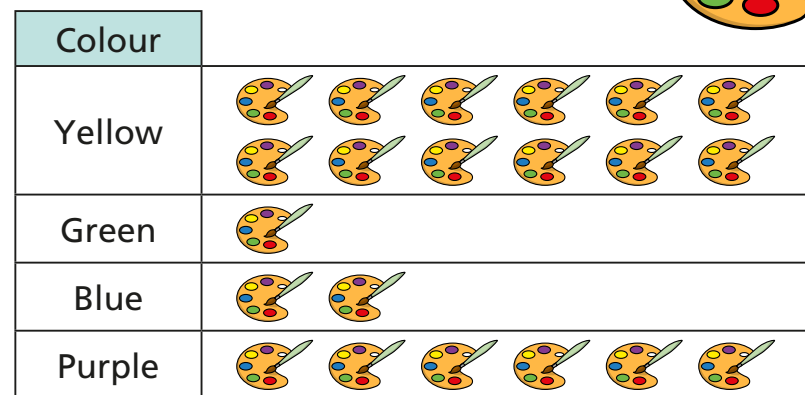
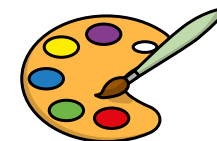


Last summer I saw a bee hive. I do not think I could draw a pictogram to show all the bees.


Do you agree with Tommy?

3 Class 1 were asked to choose their favourite colour out of yellow, green, blue and purple.

The pictogram shows the results.



Key

 = 1 child

Class 2 saw caterpillars.

Altogether Class 2 saw insects.

b)

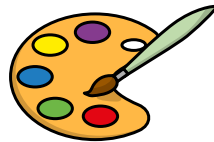


Last summer I saw a bee hive. I do not think I could draw a pictogram to show all the bees.

Do you agree with Tommy?

3 Class 1 were asked to choose their favourite colour out of yellow, green, blue and purple.

The pictogram shows the results.



Colour	
Yellow	6
Green	1
Blue	2
Purple	6

Key

= 1 child

- a) How many children chose yellow?
- b) How many children chose green?
- c) How many more children chose purple than blue?

How did you work this out?

4 Eva's friends vote for their favourite fruit. She draws a pictogram and says it shows:

- the same votes for apple and pear
- melon got the fewest votes
- plum got the most votes
- grape got only 1 vote
- grape got fewer votes than pear.

- a) Draw a possible pictogram so that Eva's statements are true.
- b) Draw a key for the pictogram.