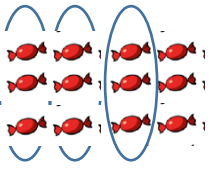


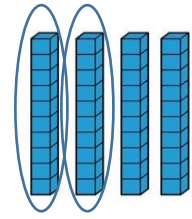
Friday

Example:



$$\frac{3}{4} \text{ of } 12 = 9$$

$$\frac{2}{4} \text{ of } 40 = 20$$



Remember the bottom number tells you how many groups to split the whole into and the top number tells you how many parts you need.

Find the fractions of these amounts:

$$\frac{2}{4} \text{ of } 16 = \underline{\quad}$$

$$\frac{3}{4} \text{ of } 28 = \underline{\quad}$$

$$\frac{2}{4} \text{ of } 32 = \underline{\quad}$$

$$\frac{2}{4} \text{ of } 80 = \underline{\quad}$$

$$\frac{3}{4} \text{ of } 80 = \underline{\quad}$$

Compare these amounts using the inequalities $>$ $<$ or $=$

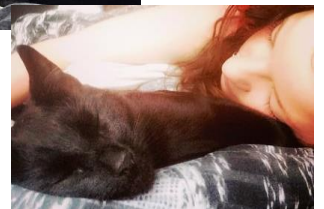
$$\frac{2}{4} \text{ of } 60 \quad \bigcirc \quad \frac{3}{4} \text{ of } 60$$

$$\frac{3}{4} \text{ of } 8 \quad \bigcirc \quad \frac{2}{4} \text{ of } 12$$

$$\frac{3}{4} \text{ of } 16 \quad \bigcirc \quad \frac{2}{4} \text{ of } 20$$

There are 24 hours in one day.

Miss Burnett's cat Horatio is asleep for $\frac{3}{4}$ of the day.



a) How many hours is he awake for? $\underline{\quad}$

b) How many hours is he asleep for? $\underline{\quad}$