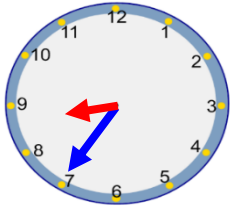
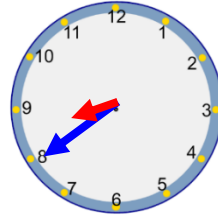


Tuesday – 25 to and 20 to



25 to  
Minute hand is on the 7.  
Hour hand is going to the 9.  
The time is 25 to 9.



20 to  
Minute hand is on the 8.  
Hour hand is going to the 9.  
The time is 20 to 9.

1. Can you complete the sentence?



The minute hand is on the 8.  
The hour hand is going to the 7.  
The time is 20 to 7.

2. Can you write the times that these clocks are showing?



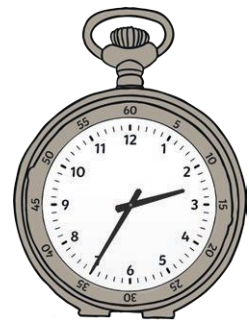
25 to 8



25 to 9



20 to 12

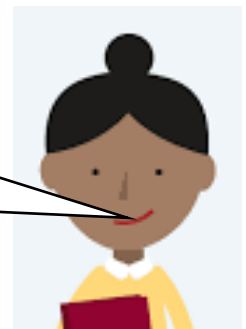


25 to 3

What mistake has Amira made?



The time is 25 past 7.



The mistake is she has got the hands mixed up. It is 25 to 6.

Buses come every 5 minutes. A bus came at 25 to 9. When would the next bus come?



20 to 9