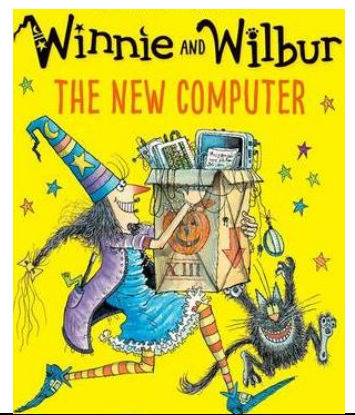
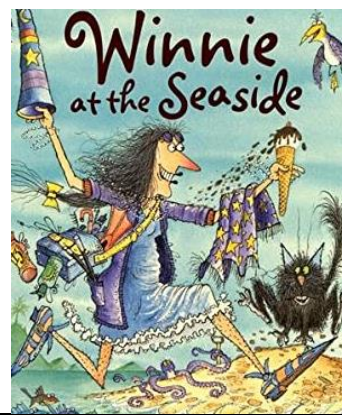
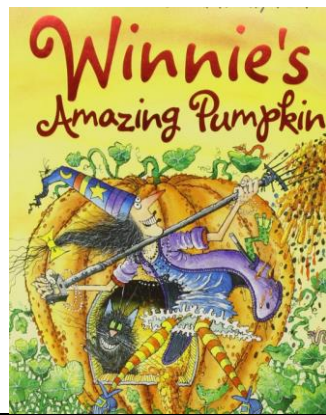
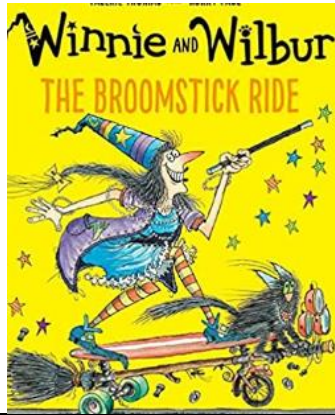


Thursday 18th June – English

Today you are going to write your own adventure for Winnie the Witch and Wilbur to go on.

Lots of books have been written about Winnie and Wilbur. Choose one of these titles and create your own story to go with the title.



Make sure your story has a beginning, middle and end. Here are some things to think about:

Beginning – set the scene.

- Introduce the characters for readers that may not know them
- Tell the reader where your story is set and what that place is like (beach, garden, house, city, countryside)

Middle – something exciting happens

- Describe the action that takes place in the story
- Does something go wrong? Does something unusual happen?

End – this is how it all comes together at the end

- Does some magic happen to sort the problem?
- Does Wilbur save the day?
- What do the characters do after the adventure?



Challenge

- Include accurately punctuated speech throughout your story, with interesting speech verbs
- Use a variety of sentence types – some short, some long, some with fronted adverbials, some starting with a conjunction